

SERVICE OPTIONS

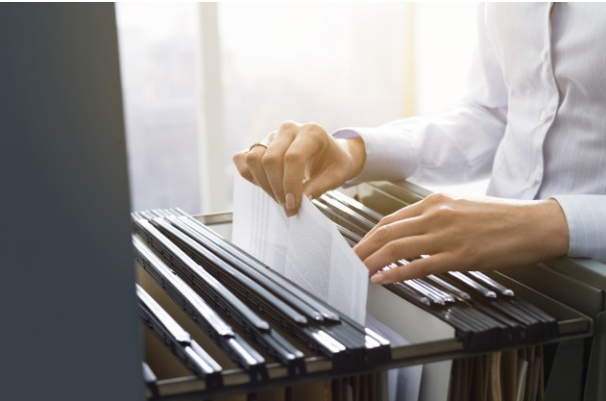
LEGAL SUPPORT

IN-PERSON & REMOTE

(MA & RHODE ISLAND)

REMOTE ONLY: VARIOUS STATES

CONSULTING | & MORE



Pledge Delegates

A Legal Support Team for All-Seasons

Consisting of polished professionals, skilled, well prepared to service firms, solo practice attorneys licensed in Massachusetts, Connecticut, New Hampshire, Maine and Rhode Island, including affiliated legal institutions in general. *We also provide Remote Legal Support Services to firms in various other states.*



A Pillar In Boston's Legal Industry



CONTACT US

Email: desk@pledgedelegates.com

Website: www.pledgedelegates.com

53 State Street, 5th Floor, Boston, MA 02109



WHY PLEDGE DELEGATES?

INVITING - UNPARALLEL FLEXIBLE PLANS
PROFESSIONAL LEGAL SUPPORT SKILLS
ATTORNEYS, FIRMS APPRECIATE

RARE FIND TALENTS PROVIDING SUPERB
QUALITY LEGAL SUPPORT WORK!



Register with Us

*Annual Fee \$365

*Monthly Fee \$49

*Quarterly Fee \$109

***This fee is non-refundable**

Your Solo Practice Firm
Small | Midsize | Large firm

Once Registered as Client Member
*Please begin submitting
assignments to us
through your assigned portal
or via email*



ATTORNEY • FIRM BENEFITS OF OUR SERVICES

- Flexible Work Schedule Remote and In-Person at the office.
- Incredible Unmatched Reasonable Hourly & Monthly Flat Fee Plans.
- We are available year-round to support your firm when and as needed.
- No Employee Benefits Necessary.
- We travel for *in-person office work in Massachusetts & Rhode Island only*.
- Distinctive services reflecting our motto: *Go the extra mile.*

*We pledge to Lawyers & Firms
Our Clients!*

COMING SOON - 2026!

Training Conferences & Webinars
For Legal Professionals

WHY CHOOSE PLEDGE?

FANTASTIC PLAN OPTIONS

The Advocate Plan

The All-Seasons Plan

The Devil's in the Details Plan

The Firm Flexible Plan

*Optional Flexible Plans
Year-Round Legal Support Solutions!*

The start of a long relationship

Thank You
Our team members are
polished professionals

Trust our knowledge & abilities
UNLIMITED!